

CROCODILE

SKIM COAT SMOOTH GATOR



CROCODILE



**Great
Covering
Smooth Finish**

**Thin,
Smooth
Coating**



CROCODILE SKIM COAT SMOOTH GATOR

Cementitious Smooth Texture Skim Coat

- Thin cementitious plaster; thickness 0.3-3 mm
- Can be used for both interior and exterior
- Improved surface durability; no cracking
- Excellent smooth surface finishes
- Great for covering cracks, and surface unevenness

- For covering cracks in the lightweight concrete, brick blocks or rendered wall, concrete wall, precast wall -

CROCODILE SKIM COAT SMOOTH GATOR

Cementitious Smooth Texture Skim Coat

“Thin, smooth coating”



Usage Area

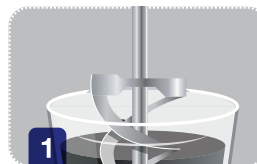
A skim coat for thin cementitious plaster for covering cracks, and surface unevenness. It can be applied to light weight concrete, blockwork or rendered wall, concrete wall, precast wall. It can reduce paint consumption by 20% (in case of using white skim coat).

Application Instruction

Substrate Preparation

- The substrate must be clean and free from loose particles, dirt, grease and traces of foreign material.
- For loose plaster areas, remove any defective materials and re-plaster the area.
- If the job site is hot or windy, dampen dry surfaces before application.

Application



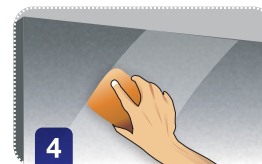
Mix the CROCODILE SKIM COAT SMOOTH with water at the specified ratio and stir with a mixer at low RPM.



Using a steel trowel, apply Skim Coat evenly to the desired thickness. Thickness for each layer varies from 0.3-3 mm.



If it necessary to increase the thickness of Skim Coat, apply a second coat after the first has set (approx. 10-30 min).



For more smoothness, the surface should be smoothed with sandpaper. Once Skim Coat has dried for 12-24 hours, it can be left exposed or a final coat such as a sealer and decorative paint may be applied.

Proportion of Mixing

Grey

- Crocodile Skim Coat Smooth Gator 2.3-2.5 kg : water 1 liter or
- Crocodile Skim Coat Smooth Gator 2.2-2.5 parts : Water 1 part (by volume)

White

- Crocodile Skim Coat Smooth Gator 2.4 -2.5 kg : water 1 liter or
- Crocodile Skim Coat Smooth Gator 2.3-2.5 parts : Water 1 part (by volume)

Estimated Coverage

- 1.25 kg / sq.m. at 1mm thickness

Packing

- 25 kg (bag)



Product Information