

CROCODILE FLOOR SMOOTH PATCH



CROCODILE



Floor Repairing
Smooth
Thin but Strong



Thin repairing,
1-2 mm



Excellence bonding



High abrasive
resistant

Innovator 1st

Thin Repairing,
Up to 1-2 mm
No Removal of
Existing Concrete Surface

**Suitable for
Slope Area**



CROCODILE FLOOR SMOOTH PATCH

Special Polymer Modified Cement Mortar for
Smoothing Floor Surface Application

- For surface smoothing application on 1-2 mm thickness without crack
- Excellence bonding to cement substrate
- High abrasive resistant. Suitable for use as top coat or overlay on heavy traffic area

- For floor repairing. Suitable for the trafficable and slope area -

CROCODILE FLOOR SMOOTH PATCH

Special Polymer Modified Cement Mortar for Smoothing Floor Surface Application

“Thin repairing, high compressive strength, suitable for trafficable area”



Usage Area

Special polymer modified cement mortar for smoothing floor surface application. Use for repairing the traffic area or any surface defects in concrete to be smooth. And use for smoothing the surface on slope area. For application on 1-2 mm thickness without crack. Excellent bonding to cement substrate. High abrasive resistant. Suitable for trafficable area such as warehouse, carpark, deck, ramp or slope area and etc. For walkable or light traffic area can open within 24 hours and within 48 hours for heavy traffic area.

Application Instruction

Substrate Preparation

- The substrate must be clean, dust-free and without any traces of oil, laitance, curing compound etc.

Mixing

- Mix Crocodile Floor Smooth Patch with water. Stir with slow speed electric mixer till homogeneous.

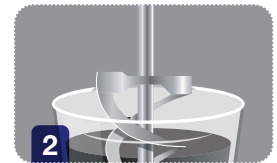
Estimated Coverage

- Approximately 2 kg powder / sq.m. / mm. It depends on the type and condition of the substrate. The exact consumption must be determined by means of a sampling of the work.

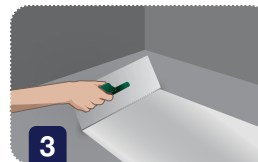
Application



1 In case there is the pinhole depth more than 2 mm in the substrate area, CROCODILE FLOOR SMOOTH BASE must be applied first.



2 Mix Crocodile Floor Smooth Patch with water. Stir with slow speed electric mixer till homogeneous.



3 Apply the mixture to the prepared substrate with trowel twice to smoothen the surface and avoid micro crack.



4 Applied area could be walked or have light traffic after 24 hours and with heavy traffic after 48 hours.

Remarks

- Smoothing surface by polished trowel to protect micro-crack.
- The concrete aggregate must be removed before application.
- Do not use product on hot surface or contact to direct sunlight. Substrate needs to reduce the temperature by water spray before applying the products.

Packing

- 20 kg (bag)



Product Information