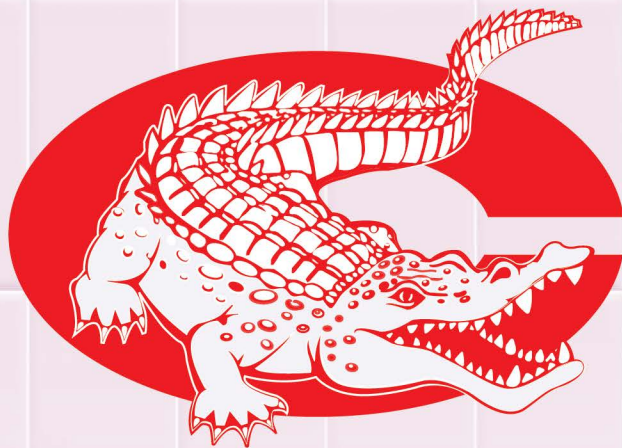


# ชาละวัน



## LASTING AND ENDURING



Products information

++CHALAWAN PLUS

CHALAWAN  
Tile Trim Plus

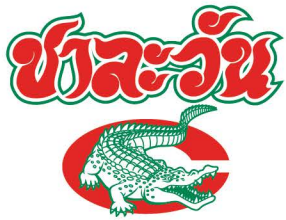


CHALAWAN  
Tile Grout



CHALAWAN  
Tile Adhesive

U.S.A. Standard from the Crocodile Family



# CHALAWAN TILING PRODUCTS

Trust by Professional A Simple Use for Best Work at Low Price

Tiling with  
**CHALAWAN Tile Adhesive**

Decorating with  
**CHALAWAN Tile Trim Plus**

Grouting with  
**CHALAWAN Tile Grout**



## CHALAWAN Tile Adhesive Simple Use and Endure

- Tiling with reasonable cost
- Substitute black lime conveniently without soaking in water.
- Use for both floor tile and internal panel

Color: Grey

## CHALAWAN Tile Grout Competitive cost for general tiles

- High adhesive, no crack
- Long-lasting
- Internal and external use
- Fine texture for easy use
- For 1-7 mm groove

Color: 30 colors

## CHALAWAN Tile Trim Plus Beautiful Endure Worthy

- Reasonable cost for tile trim decoration
- Quality uPVC grade
- UV and heat resistant
- Beautiful glossy color
- 8 mm high, 2 m long

Color: 18 colors





# CHALAWAN Tile Grout and CHALAWAN Tile Trim Plus Colors

## Colors of CHALAWAN Tile Grout and Tile Trim



## Special Colors of CHALAWAN Tile Grout



## Special Colors of CHALAWAN Tile Trim



A Simple Use for Best Work at Low Cost





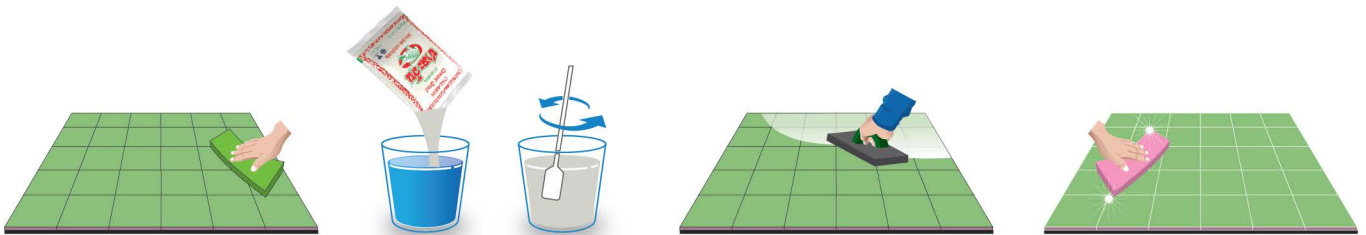
# Tiling with CHALAWAN Products

## How to lay the tile



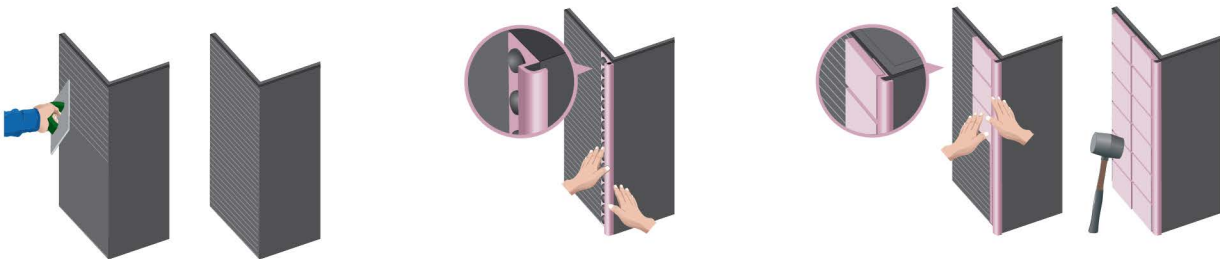
- 1 Prepare surface**  
Level and smoothen the wall.  
Clean and dry it well.
- 2 Mixing**  
Portland cement with water as instructed on the package and mix well.
- 3 Application**  
Plaster Portland cement with trowel (plain side) over the surface.
- 4 Tiling**  
Press the tile tightly or gently tap with rubber hammer.

## How to grout



- 1 Prepare surface**  
Clean the groove and remove dirt and water.
- 2 Mixing**  
Mix tile grout with water as instructed on the package and mix well.
- 3 Application**  
Fill the groove with tile grout. Sweep out the grout with trowel (plain side). Let it set and wipe the tile surface with cloth or sponge.

## How to put tile trim



- 1 Application**  
Plaster Portland cement with trowel (plain side). Then, sweep with the tooth side.
- 2 Installation**  
Put the tile trim on the Portland cement. Plaster the cement over again.
- 3 Application**  
Put the tile attach to the trim, press it or tap with rubber hammer along the trim. Then, start the second roll until the space is filled. Then, follow the grout process.