

CROCODILE GP GROUT



CROCODILE

Cost-Effective
Excellent Flow Ability
High Compressive Strength

High Compressive
Strength
Excellent
Flow Ability

For General Purpose



CROCODILE GP GROUT

General Purpose Non-Shrink Grout

- Cost effective
- High compressive strength >700 ksc
- Reduces segregation and bleeding
- Excellent flow ability

- For filling voids, beams, columns and panels -

CROCODILE GP GROUT

General Purpose Non - Shrink Grout

“Free-flowing grout, filling joint in precast concrete”



Usage Area

A ready-to-use non-shrink grout specifically for restricted spaces. Typical applications include support of structural elements such as precast walls, beams, columns and panels. Other applications include between precast wall panels, filling voids around door frames and many other types of narrow or confined areas in concrete construction.

Application Instruction

Substrate Preparation

- Roughen the surface to improve adhesion ability.
- Clean the surface to be without dirt, dust, oil, and concrete waste.
- Prepare forms which must be strong enough for mold concrete and be sealed to protect grout cement leakage.
- Moisten concrete surface then absorb excess water on the surface before application.

Mixing

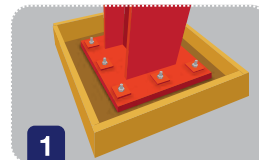
- Mix with clean water according to suggested ratio, and caution to measure mixture.
- Measure the water before mixing in a bucket.
Turn on the mixer and gradually pour in cement grout.
- Mix continuously for 2 minutes until homogeneous.
- After mixing, do not add the water.

Remarks: A portion of mixture should be appropriate for working within 30 minutes and should not add water to reuse.

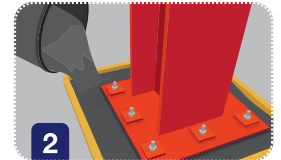
Proportion of Mixing

Mixing	Plastic	Flowable	Fluid
Product : Water (by volume)	4.6 - 4.9 : 1	3.5 - 4.3 : 1	3.2 - 3.4 : 1
Water per Product 20 kg	2.6 - 2.8 (L)	3.0 - 3.6 (L)	3.8 - 4.0 (L)

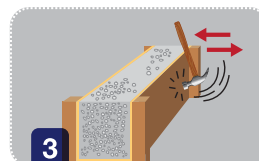
Application



Forming mold of the pour base, rechecking to be no leakage and fixed bracing firmly.



Pour Crocodile GP Grout only on one side to protect air pockets and should pour continuously until full.



Poking to fill up the grouting space.



Cure the concrete surface and the mold to be damp enough.

Curing

- All grout surfaces should be kept damped for 3 days.
- Protect the surface from shaking, heat, or severe cold for 3 days.

Estimated Coverage

- One bag of Crocodile GP Grout (20 kg) / 0.011 m³

Packing

- 20 kg (bag)



Product Information