

CROCODILE POLY U SEAL



CROCODILE



**Fast
Setting
Easy to Use**
Good Adhesion to
Various Surfaces

Fill Joint
Fast Setting
Paintable



CROCODILE POLY U SEAL

Polyurethane Sealant

- Suitable for joints subject to movement
- Highly elastic >700
- Paintable
- Leave no stain
- Can be used for interior and exterior works
- Fast setting

- For concrete, stone, brick, aluminum, ceramic, wood -

CROCODILE POLY U SEAL

Polyurethane Sealant

“ Fill joint, fast setting and paintable ”



Usage Area

Crocodile Poly U Seal is a single-component polyurethane sealant. It is easy to use, highly elastic, and weathering resistant. Good adhesion to many surfaces such as concrete, stone, brick, aluminum, roofing tiles, ceramic tiles or wood, etc.

Application Instruction

Substrate Preparation

- The substrate must be clean, dust-free and without any traces of oil, laitance, curing compound etc.
- Joint sizes may range from 3-12 mm in width and 5-10 mm in depth. The width should be wider but smaller than the depth, for better elongation. Bond breaker may be used to adjust the depth/width ratio.

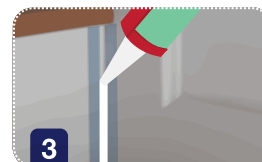
Application



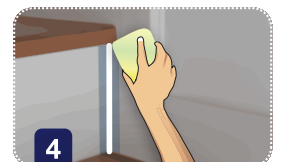
1 Cut off the nozzle tip at 45-degree angle and position the cartridge in a manual or air powered caulking gun.



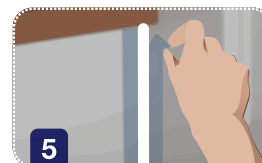
2 Tape up both sides of the joint to prevent overfilling.



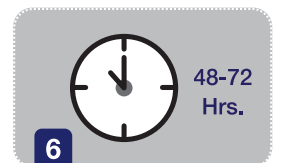
3 Squeeze out to fill the joint.



4 Wipe off the excess sealant with wet rag or sponge.



5 Remove the masking tapes within 10-15 minutes before it cures.



6 Leave for 24-48 hours before use or painting.

Estimated Coverage

- 3 m per cartridge (For 1x1 cm joint width)

Packing

- 310 ml

Color

- White / Grey



Product Information