

CROCODILE REPAIR MORTAR



CROCODILE

**Repair
Dressing**
High Compressive
Strength

General - Purpose Repair

**High Bonding
For All Areas**



CROCODILE REPAIR MORTAR

Structure Repair Mortar for General Work

- Suitable for 3 - 40 mm in thickness of repair work (or in higher thickness when mix with dust stone or multiple layers plastering)
- Easy to use, just thoroughly mix with water
- High compressive load bearing
- Excellent adhesive performance, suitable for both level and overhead areas

- For repair or dressing of concrete or cement surface -

CROCODILE REPAIR MORTAR

Structure Repair Mortar for General Work

“General - purpose repair for all areas, high bonding”



Usage Area

Crocodile Repair Mortar is non-shrink mortar, consists of modified polymer and special admixtures, is designed for high compressive strength bearing. Suitable for surface repairing work both in damaged structural and plastering areas. The product can also be used for deep defect from 3-40 mm, both level and overhead areas.

Application Instruction

Substrate Preparation

- In case that applying surface is in a spalling condition, old surface must be removed for a solid layer before repairing work.
- The substrate must be clean, dust-free and without any traces of oil, laitance, curing compound etc.
- For an area with damaged reinforcement steel, cleaning the steel and applying rust protection product then covering with Crocodile Repair Mortar with bonding agent to prevent further corrosion and improve adhesive performance during plastering.

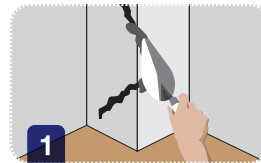
Mixing

- Mix Crocodile Repair Mortar with water at the specified mixing ratio. Mix until the mixture become thick and homogenous. For large batch mixing, spatula and motorized paddle mixer, at low speed, is required.
- Mix continuously for 2 minutes until the mixture blends well.
- It is not recommended to add any more water after the mixture starts drying.

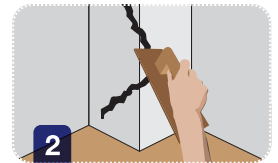
Mixing ratio

- Crocodile Repair Mortar 5 kg per 0.95 -1 liter of water by weight or
- Crocodile Repair Mortar 3.5 parts per 1 part of water by volume

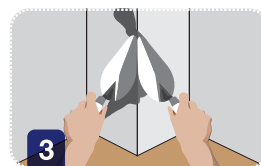
Application



Plaster with a trowel, press the cement to fill the void on damaged surface by applying 1-2 layers of plastering with 2-2.5 hours gap for each layer.



In case that plastering mixture become swollen, use wood trowel to stir or let the surface dry before dressing.



For corner repair, use 2 trowels to shape both sides, to prevent mixture overflowing to either side.



If the mixture tends to flow in vertical during the plastering, reduce the water ratio until it fits with repairing surface and temperature.

Curing

The mixture normally absorbing water and cure itself naturally. In case of high temperature or strong wind at job site, Crocodile Admix Cure is recommended to preserve internal moisture.

Estimated Coverage

- Crocodile Repair Mortar 1 bag (20 kg) per 0.011 m³

Packing

- 20 kg (bag)
- 5 kg (bucket)



Product Information